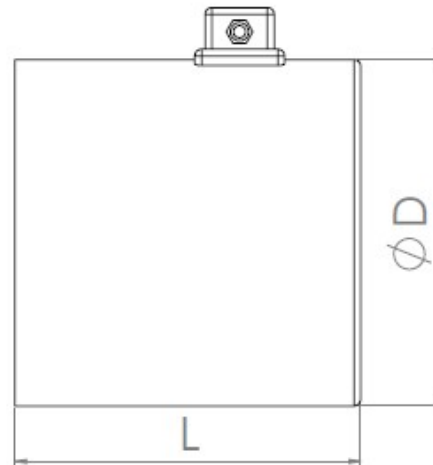


## FORCED FAN



Forced fan	P(W)	Q(m <sup>3</sup> /h)	D(mm)	L(mm)
63	24	45	125	156
71	25	52	140	169
80	29	58	157	183
90	32	91	180	195
100	58	142	202	200
112	69	229	223	210
132	52	337	264	229
160	70	609	317	278
180	85	686	367	291
200	105	1679	400	369
225	75	1786	453	360
250	115	1813	487	365
280	180	2415	548	445
315	480	2820	620	530
355	400	3500	705	620